

VPort 56-2MP Series

Preliminary

Rugged full HD day-and-night H.264 zoom IP cameras



- > -35 to 75°C operating temperature (heater or cooling fan not required)
- > 1/2.5" progressive scan CMOS camera with maximum full HD (1920 x 1080) resolution
- > 10x optical zoom and 16x digital zoom; up to 160x zoom ratio
- > High quality video image with 3DNR, BLC, and Image Stabilizer
- > Maximum 3 independent video streams, 2 x H.264 and 1 x MJPEG
- > Optional model with built-in single mode fiber
- > Two-way and full duplex audio input/output
- > DynaStream™ and CBR Pro™ supported for maximum network efficiency
- > SD card interface for disconnection and event recording



: Introduction

The VPort 56-2MP is the world's first rugged IP zoom camera that can survive in extreme temperatures ranging from -35 to 75°C, without a built-in or external heater or fan. The VPort 56-2MP is an industrial-grade Full HD resolution (1920 x 1080) H.264 box type IP camera designed for any mission critical environment. With advanced optical

technology featuring 10x optical and 16x digital zoom, the VPort 56-2MP greatly improves the efficiency of your surveillance work and ensures the best video quality. With complete optional housing and PT scanner accessories available, the VPort 56-2MP series is suitable for virtually any kind of indoor or outdoor installation.

: Specifications

Camera

Sensor: 1/2.5" HD progressive scan CMOS

Lens: 6.3 to 63 mm auto focus zoom lens

Illumination:

• Color: 0.2 lux at F1.8

• B/W: 0.05 lux at F1.8

Synchronization: Internal

White Balance: ATW, AWB

Electronic Shutter:

AES: On/Off

Fix: 1/50, 1/100, 1/250, 1/500, 1/1000, 1/2000, 1/4000, 1/10000 sec

S/N Ratio: More than 50 dB (AGC off)

ICR Control: Auto (light sensor control) or DI control

DNR: Built-in 3D DNR

AGC Control: On/Off

Backlight Compensation: On/Off

Auto Exposure: On/Off

Image Rotation: Flip, Mirror, and 180° rotation

Auto Sense Up: On/Off, Max. 64x

Image Setting: Manually tune sharpness

Video

Video Compression: H.264 (ISO/IEC 14496-10) or MJPEG

Video Output: via Ethernet

Video Streams: Up to 3 video streams (2 x H.264 and 1 x MJPEG)

• Stream 1: H.264, 1920 x 1080 resolution (max.)

• Stream 2: H.264, 1280 x 720 resolution (max.)

• Stream 3: MJPEG, full D1 resolution (max.)

Video Resolution and FPS (frames per second):

	NTSC		PAL	
	Size	Max. FPS	Size	Max. FPS
CIF	352 x 240	30	352 x 288	25
VGA	640 x 480	30	640 x 480	25
4CIF	704 x 480	30	704 x 576	25
Full D1	720 x 480	30	720 x 576	25
SVGA	800 x 600	30	800 x 600	25
HD	1280 x 720	30	1280 x 720	25
Full HD	1920 x 1080	30	1920 x 1080	25

Note: Up to 30/25 FPS for each of 3 independent streams at max resolution.

Video Viewing:

- DynaStream™ supported for automatic adjustment of frame rate
- Image stabilizer to reduce video shaking
- CBR Pro™ for optimized image quality within limited bandwidth
- 8 privacy mask areas provided
- Adjustable image size and quality
- Timestamp and text overlay
- Maximum of 10 simultaneous unicast connections
- ROI (Region of Interest) configuration for up to 3 area
- PTZ:** Compatible with VP-PT1201 PT scanner

Audio

Audio Inputs: 1 Line-in with 3.5 mm phone jack

Audio Outputs: 1 Line-out with 3.5 mm phone jack

Two-Way Audio: Full duplex two-way audio

Network

Protocols: TCP, UDP, HTTP, SMTP, FTP, Telnet, NTP, DNS, DHCP, UPnP, RTP, RTSP, IGMP, IGMPv3, QoS, SNMPv1/v2c/v3, DDNS, Modbus/TCP, 802.1X, SSL

Ethernet: 1 10/100BaseT(X) Ethernet port, RJ45 connector, or 1 100BaseFX, single mode

Standard: ONVIF

Serial Interface

RS-485: 1 full-duplex RS-485

GPIO

Digital Inputs: 1, max. 8 mA

- High: +13 to +30 V
- Low: -30 to +3 V

Relay Output: 1, max. 24 VDC @ 1 A

LED Indicators

STAT: Indicates if the system is booted properly or not

Network: 10 Mbps or 100 Mbps

Power: Power on/off

Local Storage

SD Socket: Standard SD socket (SDHC, SDXC)

Power Requirements

Input:

12/24 VDC, 24 VAC or Power-over-Ethernet (PoE+, 802.3at), redundant power design

Power Consumption: 23 W

Physical Characteristics

Camera Body Housing: Metal, IP30 protection

Installation: Wall mounting, ceiling mounting, pole mounting, corner mounting (optional external housing and mounting accessory may be required)

Alarms

Video Motion Detection: 3 independently configurable motion areas

Camera Tamper: Sensitivity adjustable camera tamper detection (Pending)

Scheduling: Daily repeat timing schedule

Imaging: JPEG snapshots for pre/trigger/post alarm images

Custom Alarms: HTTP event and CGI events for setting customized alarm actions

Email/FTP Messaging: Automatic transfer of stored images via email or FTP as event-triggered actions

Pre-alarm Buffer: 84 MB video buffer for JPEG snapshot images

Environmental Limits

Operating Temperature:

Standard Models: 0 to 60°C (32 to 140°F)

Wide Temp. Models: -35 to 75°C (-31 to 167°F)

Storage Temperature: -35 to 85°C (-31 to 185°F)

Ambient Relative Humidity: 5 to 95% (non-condensing)

Standards and Certifications

Safety: UL60950-1, EN 50121-4, NEMA TS2, Class 1 Division 2 / Atex Zone 2 (Pending)

EMI: FCC Part 15, CISPR (EN 55022) class A

EMS:

EN 61000-4-2 (ESD), Level 3,

EN 61000-4-3 (RS), Level 3,

EN 61000-4-4 (EFT), Level 3,

EN 61000-4-5 (Surge), Level 3,

EN 61000-4-6 (CS), Level 3,

EN 61000-4-8,

EN 61000-4-11

Shock: IEC 60068-2-27

Freefall: IEC 60068-2-32

Vibration: IEC 60068-2-6

Warranty

Warranty Period: 3 years

Details: See www.moxa.com/warranty

Note: The above specifications may be changed without prior notice. Please check Moxa's website or contact a sales representative for the most update specifications.

Ordering Information

Available Models

VPort 56-2MP-CAM10X: Full HD zoom IP camera, RJ45 Ethernet port, 12/24 VDC or 24VAC or PoE, 0 to 60°C

VPort 56-2MP-CAM10X-T: Full HD zoom IP camera, RJ45 Ethernet port, 12/24 VDC or 24VAC or PoE, -35 to 75°C

VPort 56-2MP-CAM10X-S-SC: Full HD zoom IP camera, Single-mode fiber Ethernet port, 12/24 VDC or 24VAC, 0 to 60°C

VPort 56-2MP-CAM10X-S-SC-T: Full HD zoom IP camera, Single-mode fiber Ethernet port, 12/24 VDC or 24VAC, -35 to 75°C

Optional Accessories (can be purchased separately)

SoftNVR-IA: 64-channel IP surveillance software for industrial automation applications

DR-4524/75-24/120-24: 45/75/120 W DIN-Rail 24 VDC power supplies

MDR-40-24/60-24: 40/60 W DIN-Rail 24 VDC power supplies, -20 to 70°C operating temperature

IP68 Indoor/Outdoor Housing

Protects camera for use in outdoor environments

VP-CI701

Construction: Die cast aluminum alloy

Dimensions: 406(L) x 109(H) x 145 (W) mm

View Window: Tempered glass

Housing Style: Clam Shell

Latch: Dual side screw-locking

Weight: 2,200 g



Wall Mount Bracket

For attaching the VP-CI701 housing to a wall

VP-CI800

Construction: Die cast aluminum alloy

Dimensions: 213 (L) x 146 (H) x 80(W) mm

Max Load: 20,000 g

Weight: 690 g



Pole Mount Bracket

For attaching the wallmount bracket to a pole

VP-CI815

Construction: Die cast aluminum alloy

Dimensions: 277.4 (L) x 75 (H) x 168.1 (W) mm

Max Load: 30,000 g

Weight: 2,400 g

Pole: Ø70 to Ø230 mm



Package Checklist

- VPort 56-2MP series IP camera
- 9-pin terminal block
- 2-pin terminal block

VP-PT1201

Industrial-grade wide operating temperature PT scanner



- > Equipped with 2 slip-rings for Pan & Tilt
- > Wide operating temperature from -40 to 70°C
- > Max. Pan/Tilt speed: 120°/sec
- > Preset accuracy: Max. ±0.1°
- > High MTBF without fan or heater
- > IP66 weatherproofing for harsh environments
- > 360° endless pan without rotating cables
- > Built-in wiper
- > Optional IR brackets to work with VP-IR series illuminator

Introduction

The VP-PT1201 PT scanner was designed specifically for Moxa's VPort 36-1MP series and VPort 56-2MP series industrial-grade IP cameras. The VP-PT1201 scanner unit allows users to build an industrial PTZ solution when working with Moxa's VPort IP cameras. In addition, the optional IR bracket allows it to be used with Moxa's VP-IR2 or VP-IR3

series IR illuminators. When using the VP-PT1201 series PT scanner with the VP-IR2/3 series IR and VPort 36-1MP/56-2MP IP cameras, ICR and IR on/off synchronization can be achieved perfectly with the VP-PT1201's built-in photocell.

Specifications

General Specifications

Supported Cameras: VPort 36-1MP Series, VPort 56-2MP Series
Communication Protocols: RS-485 (2400 to 38400 bps), Pelco-D/ Pelco-P

Photocell: Optional Sensitivity Adjustable Photocell for IR on/off and camera ICR switch

Power Requirements

Power Source: 24 VAC (±10%), 24 VDC (±10%)
Power Consumption: 25 W, maximum 40 W

Physical Characteristics

Housing Material: Aluminum die-casting
Dimensions: 219 x 510 x 530 mm (8.62 x 20.08 x 20.87 in)
Unit Weight: 11 kg
Max. Load Weight: 7 kg

PAN/TILT/ZOOM

Pan Range & Speed: 0 to 360° (endless), 0.025 to 120°/s
Tilt Range & Speed: -90 to 40° (endless), 0.025 to 40°/s
Preset Accuracy/Repeatability: Max. ±0.1° / Max. ±0.05°
Preset Speed: Max. 120°/s (Pan), Max. 40°/s (Tilt)

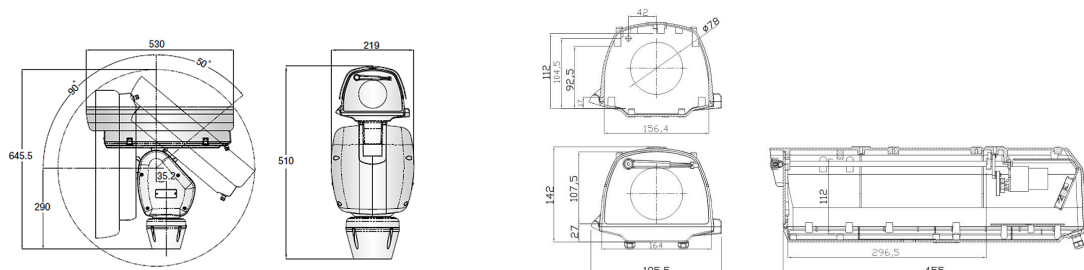
Environmental Limits

Operating Temperature: -40 to 70°C (-40 to 158°F)
Storage Temperature: -50 to 80°C (-58 to 176°F)
Ambient Relative Humidity: up to 90% RH
IP Rating: IP66

Warranty

Warranty Period: 3 years
Details: See www.moxa.com/warranty
Note: Specifications are subject to change without notice.

Dimensions



Unit: mm

Ordering Information

Available Models

VP-PT1201: PT scanner, with photocell sensor, -40 to 70°C operating temperature

Optional Accessories (can be purchased separately)

DR-4524/75-24/120-24: 45/75/120 W DIN rail 24 VDC power supplies

Package Checklist

- PT scanner
- L-type Torx screwdriver
- Quick installation guide

Wall Mount Bracket

For mounting the VP-PT120x on the wall.

VP-PTAWO

Construction: Die cast aluminum alloy

Dimensions: 400 (W) x 152 (H) mm

Max. Load: 25000 g

Weight: 1400 g



Parapet Mount Bracket

For mounting the VP-PT120x to a parapet.

VP-PTARO

Construction: Die cast aluminum alloy

Dimensions: 150 (W) x 154 (H) mm

Max. Load: 25000 g

Weight: 1000 g



IR Illuminator Bracket

For mounting the IR illuminator to the VP-PT120x.

VP-PTBI1

Construction: Die cast aluminum alloy

Dimensions: 509 (W) x 129 (H) mm

Max. Load: 3000 g

Weight: 600 g

