

# VPort 354 Series

Preliminary

## Full motion, 4-channel MJPEG/MPEG4 industrial video encoders



- > Industrial design with -40 to 75°C operating temperature and fiber optic Ethernet port
- > 2 Ethernet ports for cascade and port redundancy
- > SD card slot for local storage capability
- > Modbus/TCP supported for easy communication with SCADA software
- > Video stream up to 120 frames/sec at 4CIF (704 x 480) resolution



### Introduction

The VPort 354 is a high performance, 4-channel industrial video encoder that provides up to 4CIF full frame rate performance (NTSC: 704 x 480 @ 30 FPS; PAL: 704 x 576 @ 25 FPS) for each channel, and supports a dual MJPEG/MPEG4 algorithm, making it especially well-suited for use with distributed surveillance systems in critical industrial

applications. In addition, a continuous pre/post event trigger video record function can help system administrators determine why an alarm was triggered, and 2-way audio is provided for the convenience of real-time communication between system administrators located at the central site, and engineers in the field.

### Rugged Design for Mission-critical Industrial Environments

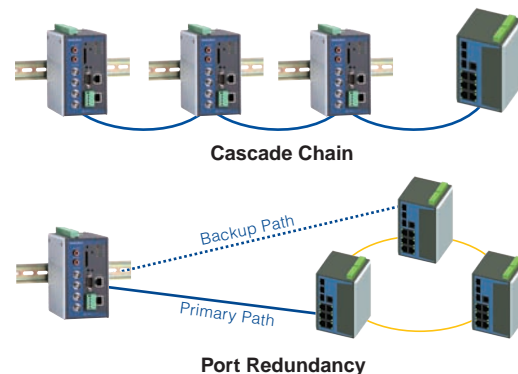
- -40 to 75°C wide operating temperature
- Built-in single-mode or multi-mode fiber optic Ethernet port—media converter not required
- 2 Ethernet ports for cascade and port redundancy
- 1 RS-232/422/485 COM port for controlling external serial devices over Ethernet (Pending)
- Redundant 12/24 VDC and 24 VAC power inputs for greater reliability
- Metal housing with IP30 protection against dust
- DIN-Rail mounting installation for industrial environments
- UL508 certification (Pending)
- Meets NEMA TS2, Section 2 requirements

### Advanced Network Protocols Support Efficient Network Transmission and Integration

- Modbus/TCP for easy communication with SCADA software
- Standard RTSP (real-time streaming protocol) video streaming for easy integration
- Multicast (IGMP) protocols for efficient network transmission
- SNMPv1/v2c/v3 MIB-II for easy network management
- QoS (ToS) for configuring the transmission priority of video streams
- UPnP, DDNS, and IP filtering supported

### Two Ethernet Ports for Cascading and Port Redundancy

The VPort 354 has two built-in 10/100 Mbps Ethernet ports for cascading multiple VPort 354 units. With the cascade feature, you'll need fewer switch ports, and also reduce your cable layout effort. An Ethernet by-pass function is also supported so that the cascade link will keep working if one of the VPort 354 units in the cascade chain goes offline. Port redundancy can be used to build a backup path for video transmission in case the primary path is broken.



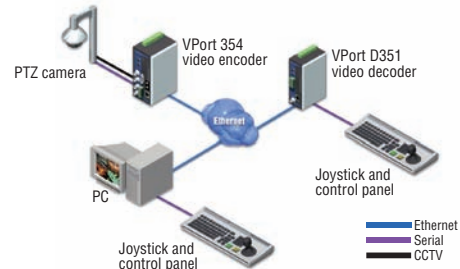
### SD Card for Storing Video Locally when the Network is Down

The VPort 354 is equipped with an SD card socket (V2.0) for local storage purposes. Enable local storage to record events that occur

when the network is down and the video stream cannot be transmitted.

## Transparent PTZ Control for Easy Control of PTZ Cameras

The VPort 354 uses Moxa's Real COM technology to implement transparent communication for RS-232/422/485 PTZ control. The benefit of the Transparent PTZ Control function is that it eliminates the need to build the PTZ control driver into the VPort product, allowing the use of a legacy PTZ control panel or keyboard to control a PTZ camera directly.



## Specifications

### Video

**Video Compression:** MJPEG or MPEG4 (ISO/IEC 14496-2)

**Video Stream:** Dual streams (one for MJPEG, the other for MPEG4) at the same video resolution (note that MJPEG only has one quality setting)

**Video Inputs:** 4, BNC connector (1.0 Vpp, 75 ohms)

**NTSC/PAL:** Auto-sensing or manual

**Video Resolution and FPS (frames per second):**

	NTSC		PAL	
	Size	Max. FPS	Size	Max. FPS
<b>QCIF</b>	176 x 120	30	176 x 144	25
<b>CIF</b>	352 x 240	30	352 x 288	25
<b>2CIF</b>	704 x 240	30	704 x 288	25
<b>4CIF</b>	704 x 480	30	704 x 576	25

### Video Viewing:

- Adjustable image size and quality
- Timestamp and text overlay

**Video Output:** Via Ethernet port

### Audio

**Audio Inputs:** 1 Line-in or MIC-in with RCA connector

**Audio Outputs:** 1 Line-out with RCA connector

### Network

**Protocols:** TCP, UDP, HTTP, SMTP, FTP, Telnet, NTP, DNS, DHCP, UPnP, RTP, RTSP, ICMP, IGMPv3, QoS, SNMPv1/v2c/v3, DDNS

**Ethernet:** 2 10/100BaseT(X) auto negotiating RJ45 ports, or 2 100BaseFX fiber ports (single/multi-mode, SC connector)

### Optical Fiber:

	100BaseFX	
	Multi-mode	Single-mode
Wavelength	1300 nm	1310 nm
Max. TX	-10 dBm	0 dBm
Min. TX	-20 dBm	-5 dBm
RX Sensitivity	-32 dBm	-34 dBm
Link Budget	12 dB	29 dB
Typical Distance	5 km <sup>a</sup> 4 km <sup>b</sup>	40 km <sup>c</sup>
Saturation	-6 dBm	-3 dBm

- a. 50/125 μm, 800 MHz\*km fiber optic cable  
 b. 62.5/125 μm, 500 MHz\*km fiber optic cable  
 c. 9/125 μm single-mode fiber optic cable

### Serial Port

**PTZ Ports:** 1, RS-232/422/485 port (terminal block connector), max. speed of 115.2 Kbps, with 15 KV ESD protection

**COM Ports:** 1, RS-232/422/485 (DB9 female connector), max. speed of 115.2 Kbps, with 15 KV ESD protection

**Console Port:** 1 RS-232 RJ45 port

### GPIO

**Digital Inputs:** 4, max. 8 mA

- High: +13 to +30V
- Low: -30 to +3V

**Relay Outputs:** 2, max. 24 VDC @ 1 A

### LED Indicators

**STAT:** Indicates if the system booted properly or not

**PWR1:** Power 1

**PWR2:** Power 2

**FAULT:** Can be configured to correspond to system alarm, power failure, video loss, or disconnected network

**V1, V2, V3, V4:** Video input signal activity

### Local Storage

**SD Socket:** Standard SD socket, V2.0, with SD LED indicator

### Power Requirements

**Input Voltage:** 2 12/24 VDC or 24 VAC inputs for redundancy

**Power Consumption:** Approx. 12 W

### Physical Characteristics

**Housing:** Metal, IP30 protection

**Dimensions:** 80.2 x 135 x 105 mm (3.16 x 5.31 x 4.13 in)

**Weight:** 1200 g

**Installation:** DIN-Rail mounting, wall mounting (with optional kit)

### Alarms

**Video Motion Detection:** Includes sensitivity tuning (Pending)

**Video Loss:** Video loss alarm

**Scheduling:** Daily repeat timing schedule

**Imaging:** JPEG snapshots for pre/trigger/post alarm images

**Email/FTP Messaging:** Automatic transfer of stored images via email or FTP with event-triggered actions

**Custom Alarms:** HTTP event servers and CGI events for setting customized alarm actions

### PAN/TILT/ZOOM

**PTZ Camera Control:** Via RS-232/422/485 PTZ port or COM port

**PTZ Control Functions:** PAN, TILT, ZOOM, FOCUS, moving speed, preset position (max. 25 positions), and 10 custom commands

**PTZ Function Updates:** Driver upload supported

**Supported Devices and Protocols:** Pelco D, Pelco P, Dynacolor DynaDome, Yokogawa (Fieldeye series), Cohu Custom Camera

**Transparent PTZ Control:** Control PTZ cameras with legacy PTZ control panel or keyboard connected to a PC or VPort decoder

### Security

**Password:** User level password protection

**Filtering:** By IP address

### Environmental Limits

**Operating Temperature:**

Standard Models: 0 to 60°C (32 to 140°F)

Wide Temp. Models: -40 to 75°C (-40 to 167°F)

**Storage Temperature:** -40 to 85°C (-40 to 185°F)

**Ambient Relative Humidity:** 5 to 95% (non-condensing)

### Regulatory Approvals

**Safety:** UL508 (Pending)

**EMS:**

- EN61000-4-2 (ESD), level 3
- EN61000-4-3 (RS), level 3
- EN61000-4-4 (EFT), level 3
- EN61000-4-5 (Surge), level 3
- EN61000-4-6 (CS), level 2
- EN61000-4-8
- EN61000-4-11

**EMI:** FCC Part 15, CISPR (EN55022) class A

**Traffic Control:** NEMA TS2

**Shock:** IEC 60068-2-27

**Freefall:** IEC 60068-2-32

**Vibration:** IEC 60068-2-6

Note: Please check Moxa's website for the most up-to-date certification status.

### Warranty

**Warranty Period:** 5 years

**Details:** See [www.moxa.com/warranty](http://www.moxa.com/warranty)

### System Requirements

**CPU:** Pentium 4, 2.4 GHz or above

**Memory:** 512 MB memory or above

**OS:** Windows XP/2000 with SP2 or above

**Browser:** Internet Explorer 6.x or above

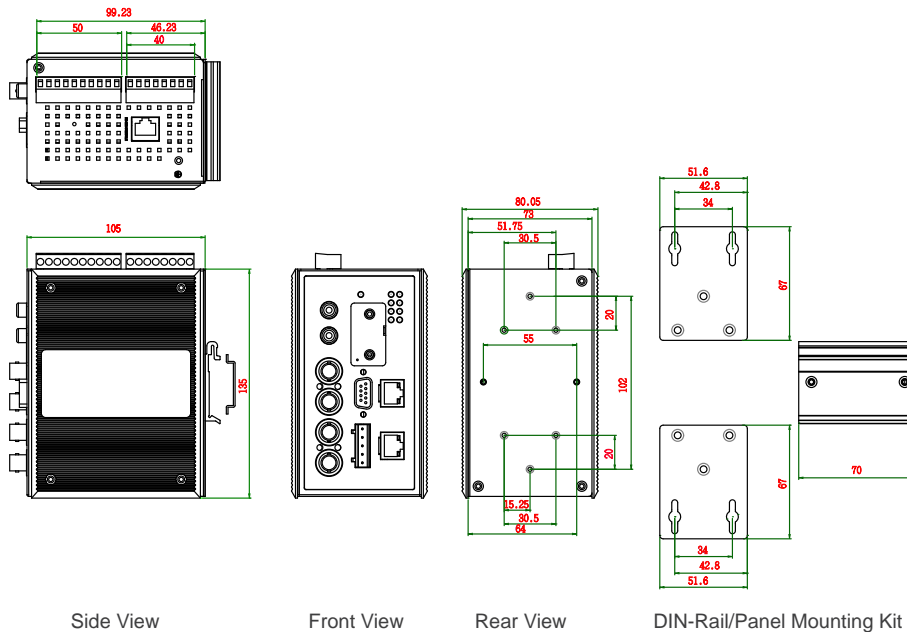
**Multimedia:** DirectX 9.0c or above

### Software Bundled Free

**SoftDVR™ Lite:** 1 to 4-ch IP surveillance software for viewing and recording

**VPort SDK PLUS:** Includes CGI commands, ActiveX Control, and API library for customized applications or system integration for third-party developers (the latest version of SDK is available for download from Moxa's website).

### Dimensions (unit = mm)



### Ordering Information

Available Models		Port Interface		
Standard Temperature (0 to 60 °C)	Wide Temperature (-40 to 75 °C)	10/100BaseT(X)	Multi-mode, SC Connector	Single-mode, SC Connector
VPort 354	VPort 354-T	2	---	---
VPort 354-MM-SC	VPort 354-MM-SC-T	---	2	---
VPort 354-SS-SC	VPort 354-SS-SC-T	---	---	2

### Optional Accessories (can be purchased separately)

**SoftNVR:** Expandable IP surveillance software for managing up to 64 video channels

**SoftDVR™ Pro:** 16-channel IP surveillance software for viewing and recording

**DR-4524/75-24/120-24:** 45/75/120 W DIN-Rail 24 VDC power supplies

**MDR-40-24/60-24:** 40/60 W DIN-Rail 24 VDC power supplies, -20 to 70°C operating temperature

**WK-46:** Wall mounting kit

**RK-4U:** 4U-high 19" rack mounting kit